

SSOW 37: Machine Control Cab Kit Retrofit

Issue Number: 01

Date of Issue: 12/06/2026

Based on: RA98

PURPOSE

To ensure Sitech cab kit retrofit activities on CAT dozers and excavators are carried out safely and without harm to personnel or property. This SSOW must be read alongside RA26 and task-specific RA98 and followed by all personnel involved in the activity.

PPE REQUIREMENTS

For this activity, the following PPE must be worn

					
☒	☒	☒	☒	☒	☐
High-vis Vest / Jacket (BS EN 471)	Safety Boots (EN ISO 20345:2011) (S3)	Safety Gloves (Cut resistant) (EN 420:2003)	Safety Helmet (EN 397:1995)	Safety Glasses (EN 166)	N/A

TRAINING REQUIREMENTS

- Only trained, competent and authorised LPH Machine Control fitters may carry out this task.
- Personnel must be familiar with RA26, RA20, RA51, RA11, RA19, RA52 and this SSOW.
- Personnel must be briefed on site-specific rules, emergency arrangements, access/egress and exclusion zones.
- Fitters must understand safe plant access principles, three-point contact, and correct manual handling techniques.

EQUIPMENT REQUIREMENTS

- Sitech cab kit including screen, antennas and radio.
- Secure kit case for transport.
- Spill kit for minor leaks.
- Torch or task lighting if required.
- No power tools are used for this activity.

SAFE SYSTEM OF WORK

Pre-Start Requirements

- Review RA26, RA98 and this SSOW prior to starting work.
- Attend the site-specific induction.
- Confirm emergency arrangements including muster point, first aid and site contacts.
- Confirm work area with customer and ensure safe pedestrian route.
- Inspect work area for hazards including ground conditions, lighting, weather and nearby plant movements.

Machine Isolation

- Machine must be parked on firm, level ground, isolated and immobilised to prevent unexpected movement.
- No electrical work is to be undertaken during this task.

Accessing the Machine

- The preferred method of access is to use podium platforms/steps in line with RA69. This includes ensuring the podium is erected on firm, level ground, brakes applied, and all locking mechanisms engaged.
-
- Where podium access is not practicable, access must be made using designated machine steps, tracks or approved boxing-ring areas only.
- Maintain 3-point contact at all times when climbing on or off the machine.
- Do not step onto curved, oily, loose or unstable surfaces.

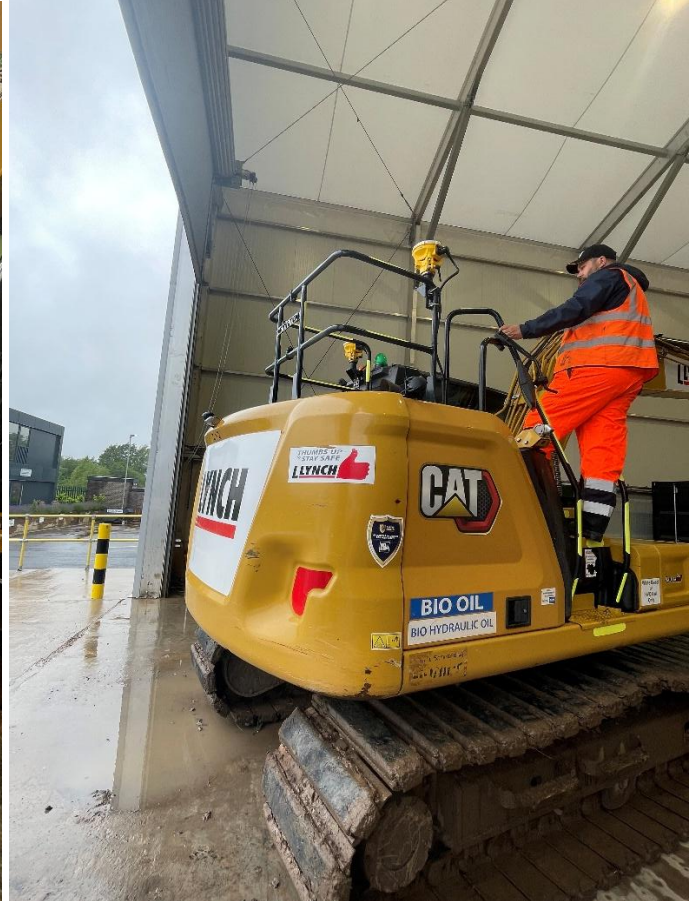
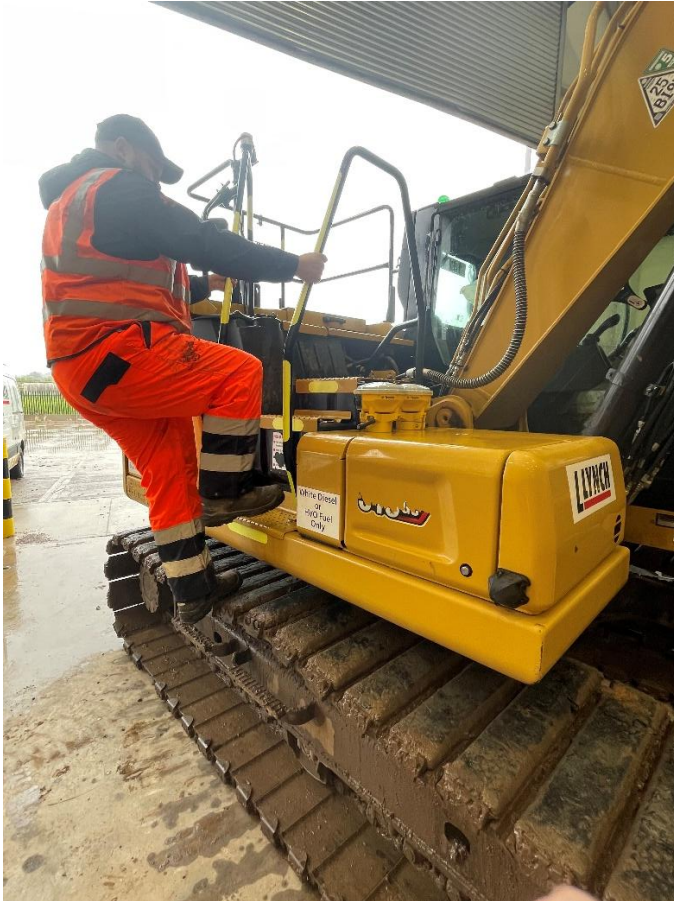
SSOW 37: Machine Control Cab Kit Retrofit

Issue Number: 01

Date of Issue: 12/06/2026

Based on: RA98

- Ensure the cab door is secured open when working inside the cab.
- Do not climb while carrying loose items; place tools and kit safely before ascending.
- Work at Height Permit to Work to be obtained from site where required prior to work commencing.



Manual Handling

- Carry kit in a secure case and place on stable ground.
- Handle components close to the body to reduce strain. Avoid overreaching; reposition safely if required.

Carrying Out the Retrofit

- All components including screen, antennas and radio must be installed in accordance with the manufacturer's instructions.
- No handheld power tools are to be used, manual install.
- Dozer installation: antennas and radio mounted at the front of the cab.
- Excavator installation: antennas mounted on the boxing ring and radio mounted at ground level in the side panel.
- All components are fitted external; no wiring, panel access or battery interaction required.
- Work must stop immediately if safe access cannot be maintained.

Working Around Moving Plant/Vehicles

- Remain aware of moving plant and vehicles at all times.
- Segregate work and stop work if plant enters the work area.

SSOW 37: Machine Control Cab Kit Retrofit

Issue Number: 01

Date of Issue: 12/06/2026

Based on: RA98

Weather Controls

- Assess weather conditions before stepping onto tracks or upper structure.
- Stop work if wind increases, surfaces become slippery or visibility reduces.

Emergency Situations

- In the event of injury, spill, fire or unsafe condition, stop work immediately and follow site emergency procedures.
- Spills must be contained using spill kits and disposed of correctly.
- In the event of fire, evacuate using the nearest safe route and report to the assembly point.
- All incidents, near misses and unsafe conditions must be reported as soon as safe to do so.

Completion of Work

- Ensure all components are securely installed.
- Remove all items from the cab and surrounding area.
- Machine must remain immobilised until fitter has fully exited the work area.
- Remove any waste and leave the area clean and safe.

IDENTIFIED RISKS

The SSOW above has been compiled after identifying the following risks from this activity

- Slips, trips and falls due to weather, uneven ground or poor housekeeping.
- Falls from height when accessing tracks, cab or boxing ring.
- Dropped objects during installation.
- Manual handling injuries.
- Unexpected machine movement.
- People and plant interface risks.
- Environmental incidents from minor spills.
- Emergency situations including injury or fire

FOR MORE INFORMATION, PLEASE REFER TO RISK ASSESSMENTS RA26 + RA98

Owner: Head of HSQE	Version: 2	LF266
Uncontrolled if printed or copied. Always check for latest version.		Page 3 of 3